

# Kingston Parish Council (KPC)

## Minutes of Meeting held at 7.30pm on 8th November 2022

Present:

Sue Dagleish (SD)  
Katherine Reid (KR)  
Julie Conder (JCo)  
Miki Ellar (ME)

In attendance:

Katie Vickers (KV)  
Mark Nicholls (MN)

### 1. Apologies

- 1.1. Tumi Hawkins – District Councillor

### 2. Minutes of last meeting

- 2.1. Parish Council meeting held on 12th July 2022 accepted and signed.
- 2.2. Parish Council meeting held on 28th September 2022 accepted and signed.
- 2.3. Extraordinary meeting held on 25th October 2022 accepted and signed.

### 3. Matters ongoing

- 3.1. East West railway (SD and JCo)  
The focus is moving from use as a commuter line to transporting freight but likely to be a hybrid of the two. SD to continue monitoring.
- 3.2. Kingston phone box (KV).  
Currently no grant has been found to assist with this project. Next step is to investigate the electric supply to the phone box with BT (KV)
- 3.3. Parish Council Vacancy  
The Parish Council welcomes MN onto the Parish Council. The Parish Council still has one vacancy.
- 3.4. Repair of damaged gate and post in Orchard (KV)  
Two quotes received. SD to review before approval.
- 3.5. Registering land with Land Registry (KV)  
All paperwork to be copied and passed to MN to action in the New Year.
- 3.6. New flight paths for Luton Airport (SD)  
SD pointed the Council to an extract from Cllr Tumi Hawkins' November report:

*“Reminder - those who are being affected should please continue to send in a report to Luton Airport Authority (LAA) via the reporting process every time it happens. This Post Implementation Review (PIR) period ends 31st May 2023. Send an email to [noise@ltn.aero](mailto:noise@ltn.aero) or [noise.enquiries@ltn.aero](mailto:noise.enquiries@ltn.aero), stating your name and address, the date and time of the flight and effect it had on you. Where possible make a video or audio recording on your phone of the flight event that caused the disturbance as part of your record keeping. Copy the MP in and the RELAS team [info@relas.uk](mailto:info@relas.uk) for District Councillor Tumi Hawkins p3 [www.TumiHawkins.org.uk](http://www.TumiHawkins.org.uk) the record. There is still a chance to make a change by reporting the impact AD6 is having on everyday life of everyday people. RELAS group is at <https://www.facebook.com/groups/relas.ad6>”*

Information to be shared via Village Newsletter and Village website (ME & JD)

- 3.7. Annual Parish Meeting – feedback and actions (SD)  
The meeting was well supported. Questions regarding street lighting and grass cutting have been addressed and resolved by the Clerk. Concern was raised about the speed of traffic through the village. Cambridgeshire Highways are in the process of reviewing the application process of implementing 20mph. Once published the Parish Council will

discuss. Clerk actioned to look-up old correspondence on resurfacing of Crane Lane and Community Speed Camera

#### 4. Matters arising No. 18 Bus Service to Kingston (SD)

The Parish Council acknowledged the worry and stress caused by the changes to the village bus service. A new provider has been identified (Whippet) and we await

- 4.1. confirmation of the new timetable. JCo to monitor.
- 4.2. Finance:
  - 4.2.1. Bank signatories (KV)  
Clerk to contact Unity to add MN as a signatory. (KV)
  - 4.2.2. Review and acceptance to adhere to the Standing Orders and Financial Regulations  
JCo has reviewed our current SOFR and passed to Clerk to review and fill in the gaps. (KV)
  - 4.2.3. 2023/24 Budget (KV & JCo)  
The budget needs to be ready to be discussed at the next Parish Council meeting in January 2023. SD, JCo & KV to meet to discuss.

#### 5. Correspondence

- 5.1. Planting of Oak Tree to mark Queen Elizabeth II's Platinum Jubilee (SD)  
Site for planting has been found and permission has kindly been granted by landowner.
- 5.2. CCC 2022/23 Grass Cutting Contribution has been received.
- 5.3. SCDC – have confirmed that all SC street lamps in the village are now LED.

#### 6. County Councillor's report – no report received.

#### 7. District Councillor's report – see attachment A

#### 8. Open Spaces Report

- 8.1. RoSPA Inspection report risks highlighted: Tunnel needs attention (KV)  
Ongoing.

#### 9. Clerk's report

- 9.1. Bi-monthly report – see attachment B.
- 9.2. Invoices:

Company	Service	Date Paid	Amount	Paid by:
Opus Energy	Footway lighting	15 September 2022	£12.36	DD
Buchan's Landscapes	Grass cutting – September	29 September 2022	£519.53	B/P
Katie Vickers	Clerk Salary – September 2022	30 September 2022	£184.25	B/P
Unity Bank	Service Charge	30 September 2022	£18.00	DD
Opus Energy	Footway lighting	17 October 2022	£12.41	DD
Katie Vickers	Clerk Salary – October 2022	02 November 2022	£184.25	B/P
Cambs ACRE	Membership 2022/23	02 November 2022	£57.00	B/P
CAPALC	Membership 2022/23	Approved – awaiting updated invoice	£186.69	
CAPALC	Clerk Knowledge Training (18 & 25 January 2023)	Approved – to be paid in Jan '23	£250.00	
Katie Vickers	Footway lighting	Approved	£13.39	DD

Katie Vickers	Clerk Salary – November	Approved	£184.25	
Katie Vickers	Clerk Salary – December	Approved	£184.25	

**10. Planning**

10.1. No new applications.

**11. Items for next meeting**

11.1. Village Design Guide (KV)

11.2. New Constituency Boundary proposals. The Commission will present final recommendations to Parliament by July 2023 (KV)

**12. Date of next meeting – 10th January 2023**

Meeting closed 20:55

Meeting minutes ref: 20221108KPC

Approved: \_\_\_\_\_

Date: \_\_\_\_\_

## South Cambridgeshire District Council – Caldecote Ward

(comprises the Parishes of Caldecote, Childerley, Kingston, Bourn, Longstowe & Little Gransden)

### Councillor's Monthly Report – November 2022

This report of previous month events is for all the Ward, so please be aware that some of the content may not be relevant to your particular Parish.

---

#### General

Please contact me with comments, questions, problems, reports, suggestions or complaints to do with SCDC services. These are housing need, housing repairs for council tenants, planning, benefits, council tax, bin collection, environmental health issues etc. Don't fight on your own. I am available to help you to get the best outcome possible for your situation.

Check out articles on my facebook page <https://www.facebook.com/itsCouncillorTumi> and my blog <http://www.TumiHawkins.org.uk>. What I post on there is my view and not LibDem or South Cambs official policy unless I state that it is.

#### Transport

##### Update New Bus Services No. 18 and Citi4

I reported last month that Stagecoach, the major bus operator announced their withdrawal of many bus services and rerouting others after 30th October 2022. The No.18 serving Kingston, Bourn and Longstowe was withdrawn, and rerouting of Citi4 removed services to Bourn Turn and Caldecote Turn. The entire ward suddenly faced no bus service.

The Mayor of Cambridgeshire and Peterborough Combined Authority (CPCA) is responsible for Transport across the County, and following Stagecoach announcement, decided to outsource the withdrawn services. At South Cambs Full Council meeting, I requested that the Council ask the Mayor to include the revised bus routes such as Citi4 in the tender list, and I am glad that this was done.

The tender process was successful, and I am happy to report that No.18 route is now being run by Whippet Coaches, along the same route as before so serves Kingston. It also extends from Cambourne to St Neots replacing that section of the Bus 905 route. The Citi4 will continue to run as before, maintaining its current route via Bourn and Caldecote Turns. You can read full details in my blog at <https://bit.ly/Citi4and18>.

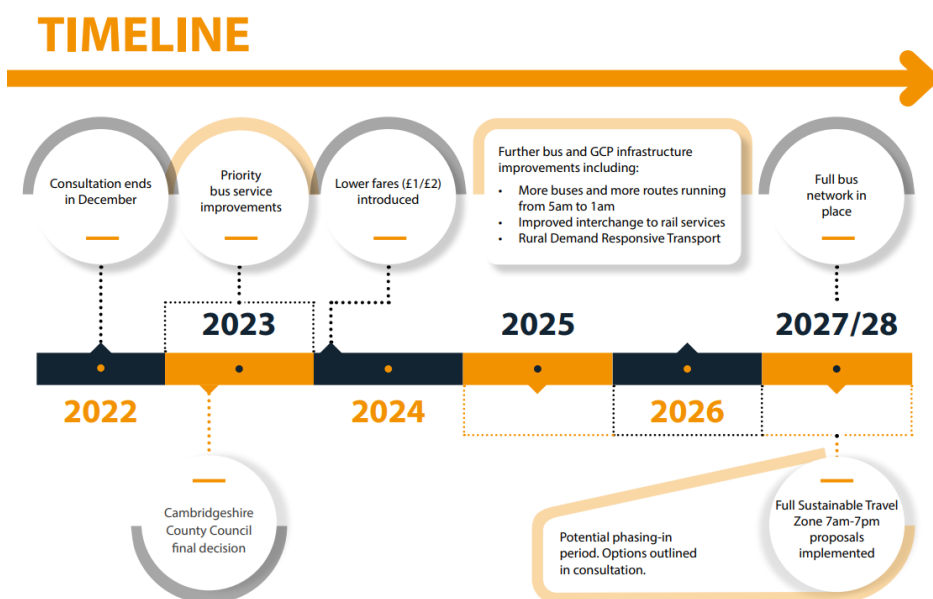
The CPCA is funding these contracts at about £1.5mil for 6 months and in the meantime will work potential permanent solutions for bus services. It is most unlikely that government is going to provide the money to run the services especially as bus cuts are happening all over the country. There are two options being considered. One is a 'Mayoral Precept' which means that probably £20 will be added to council tax specifically to subsidise bus services. The other option which will provide money for a doubling of the bus network on Cambridge and South Cambridgeshire is to introduce a road charge in Cambridge. This would generate about £50mil per year and is the subject of a public consultation ending December 23<sup>rd</sup>

##### GCP Making Connections Consultation

The Greater Cambridge Partnership (GCP) has launched the Making Connections 2022 consultation running for 10 weeks **until 23 December 2022**. The proposals are described as a 'once-in-a-generation opportunity to change how we travel in the Greater Cambridge area, relieving pressure on the network and responding to air quality, cost of living and climate crises for a better, cleaner and safer future'.

The survey, plus information about the proposals, including maps, frequently asked questions, dates of public meetings etc can be found here: <http://www.greatercambridge.org.uk/mc-2022>

Residents and those travelling to the area are being asked for their thoughts on the three parts of the proposal. (1) Transforming the bus network with proposals from mid-2023 to transform the bus network through new routes, additional services, cheaper fares (£2 across the district)) and longer operating hours. (2) Investing in other sustainable travel schemes alongside the bus network. GCP is proposing to invest in new sustainable travel schemes, such as better walking and cycling links. (3) After the first two are implemented which is expected to be around 2027/28 the GCP proposes creating a Sustainable Travel Zone which includes a road user charge. Vehicles would be charged for driving within the zone between 7am and 7pm on weekdays, potentially phasing it in. The money raised would be used to fund improvements to the bus network and other sustainable travel schemes. See the timeline information below.



Please provide this information to your residents and encourage them to respond to the consultation. The correct information is available here: <http://www.greatercambridge.org.uk/mc-2022>. I also encourage all the Parish Councils to respond please as it will benefit the ward villages one way or another. There are online webinars on 7<sup>th</sup> and 9<sup>th</sup> November that those unable to attend drop in public exhibitions can attend. Check out the consultation webpage for full list-here are some.

Monday 7 November, 6-8pm - to join the West Area Community Forum meeting, register at [https://us06web.zoom.us/webinar/register/WN\\_cqTWNtgSmefj4OiMwnNuA](https://us06web.zoom.us/webinar/register/WN_cqTWNtgSmefj4OiMwnNuA)(External link)

Wednesday 9 November, 7-8pm, Zoom Webinar for the Making Connections consultation register at [https://us06web.zoom.us/webinar/register/WN\\_r12Egi\\_EQPOuJ2H8OzCmYQ](https://us06web.zoom.us/webinar/register/WN_r12Egi_EQPOuJ2H8OzCmYQ)

### **Luton Airport Flight Path and Airspace Deployment (AD6) change**

Reminder - those who are being affected should please continue to send in a report to Luton Airport Authority (LAA) via the reporting process every time it happens. This Post Implementation Review (PIR) period ends 31<sup>st</sup> May 2023. Send an email to [noise@ltn.aero](mailto:noise@ltn.aero) or [noise.enquiries@ltn.aero](mailto:noise.enquiries@ltn.aero), stating your name and address, the date and time of the flight and effect it had on you. Where possible make a video or audio recording on your phone of the flight event that caused the disturbance as part of your record keeping. Copy the MP in and the RELAS team [info@relas.uk](mailto:info@relas.uk) for

---

the record. There is still a chance to make a change by reporting the impact AD6 is having on everyday life of everyday people. RELAS group is at <https://www.facebook.com/groups/relas.ad6>

### **EWR Update**

This still seems to be very much in the offing so to speak. I attended a briefing at Westminster last month, where the big businesses and then Rail Minister spoke. Representatives from AstraZenica in Cambridge and AIIMI in Milton Keynes spoke, as well as the EWR Co Chief Executive. The point they made is that Cambridge and wider region to Oxford is competing internationally with the likes of the Silicon Valley in the USA. Companies that can't establish here go outside the country, taking much needed investment with them. They see the EWR as vital to unlocking talent from a wider area, create new jobs and support the growth of the biotech, science and technology sectors. These sectors also generate more jobs in supporting local areas from food, to childcare, education and leisure provision.

The Rail minister was not able to give any definite statement on the Bedford to Cambridge section, other than that he knows a new rail line has to be built, unlike other sections where existing lines were improved. He spoke about finding cost-effective ways to deliver the railway. I challenged him and the EWR Chief Exec by asking them how they intended to deal with communities that will be hosting that section, giving the massive damage existing preferred alignments would cause, and what benefits would be provided. I asked for better engagement now, before the final decision was made, rather than at the DCO stage when planning permission from Government was being sought. I will be following up on this with the Chief Exec as she stated her clear intention for better engagement and look at ways to mitigate potential damage. So we are still waiting for Government to say whether or not it will fund the Bedford to Cambridge stage.

### **Community and Wellbeing**

#### **Warm hubs**

Further to my report last month about how Local authorities are responding to the cost of living crisis by helping communities to set up "Warm Hubs, I am happy to report that in South Cambridgeshire, the first set of warm hubs have now opened. They are at Gamlingay, Meldreth, Caldecote, Hardwick, Cambourne, Cottenham (has two), Rampton, Comberton and Great Shelford. The Caldecote Warm Hub takes place at Caldecote Pavilion, Furlong Way, Highfields, Caldecote, Cambridge, CB23 7ZH. The Hub is open every Tuesday, 9.30am - 12.30pm and Thursday, 12pm - 3pm. The full list can be found at <https://www.cambsacre.org.uk/first-warm-hubs-are-now-open/>

Villages that want to set one up can still contact Cambridgeshire Acre or South Cambs for assistance at <https://www.cambsacre.org.uk/introducing-warm-hubs/>

#### **Action for Happiness**

The Action for Happiness theme for this month at <https://www.actionforhappiness.org/calendar>. is **New Ways November**. This month's focus is "Try something new". Don't be afraid, step out of your comfort zone and soar – Michelle Obama.

#### **Rough Sleeping Estimate**

Every year we request communities to help us to find out the number of people sleeping rough in the district. This year we ask again, for an estimate overnight the evening of 17<sup>th</sup> November to the morning of 18<sup>th</sup> November. These are people sleeping in the open air (such as on the streets, in tents, doorways, parks, bus shelters or encampments). Or in buildings or other places not designed for habitation (e.g as stairwells, barns, sheds, car parks, cars, derelict boats, stations, or makeshift shelter structure, often made from tarpaulin or wood).

---

Useful info to provide is their location, gender, estimate of age bracket (under 18, 18-25, 26-40, over 40), nationality if known (UK, EU or Non-EU). Send the info to [susan.carter@scambs.gov.uk](mailto:susan.carter@scambs.gov.uk).

Please find attached a fact sheet for Severe Weather Provision. These arrangements are to ensure there is a humanitarian response to prevent rough sleepers coming to significant harm or dying from the impact of severe weather conditions

### **Cost of Living Crisis**

The Government established a £150 council tax rebate to help with the cost of living crisis. But it turns out some eligible households have yet to claim it. As a result, the government has now extended the deadline to 30 November 2022. Please let your communities know so those eligible and have not yet got their rebate to apply. <https://www.scambs.gov.uk/council-tax/council-tax-support/>

There's more information on the Council website providing information on where to get help and advice to deal with the ongoing cost of living crisis <https://www.scambs.gov.uk/cost-of-living-support/>

### **Community Chest Grant for Cost of Living Crisis Adaptations**

The Council has adapted the criteria of the Community Chest grant from November 2022 until April 2023 to allow all Parish and Town Councils in South Cambridgeshire to bid for Community Chest grants that provide a benefit to those affected by the cost-of-living crisis. It could be used for revenue costs or overheads, but not for provision of food. Warm hubs would be good examples. The Council received £20,000 for this from a successful bid to the Integrated Care System.

### **Everyday Needs Grants**

The Everyday Needs Grants Programme from the Royal British Legion is designed to assist people who need help in a quick and easy way with essentials such as kitchen appliances, clothes, and energy costs. Providing up to £2,400 a year in £200 monthly instalments, successful applicants receive vouchers for energy and vouchers for food, clothing and white goods. The Legion is dedicated to supporting not only serving and ex-serving personnel but the whole of the Armed Forces community, including families, dependants, and carers – which can include children, current and former spouses and partners, widows and widowers. For more information call 0808 802 8080 or visit website at [rbl.org.uk/costofliving](http://rbl.org.uk/costofliving).

### **Community Police Survey**

South Cambs Police are carrying out a survey as they want to hear what residents think the neighbourhood policing team should be tackling. They are particularly keen to also hear from young people. It is at <https://bit.ly/CommunityPoliceSurvey> and I encourage all parish councils to complete this survey and share it with your communities too.

## **Business Support**

### **South Cambs Christmas Market**

On Sunday 11<sup>th</sup> December 2022, from 11:00AM until 3:00PM, South Cambridgeshire District Council is hosting an indoor Christmas Market, at Cambourne Village College CB23 6FR, presenting local independent traders of all crafts and talents from the district. There will be 70 stalls featuring a diverse range of businesspeople and there will be mobile food and drink caterers available to provide festive refreshments. Contact [businesskeyprojects@scambs.gov.uk](mailto:businesskeyprojects@scambs.gov.uk) or check out the webpage at <https://www.scambs.gov.uk/business/south-cambridgeshire-markets/south-cambridgeshire-christmas-market-2022/>

---

This is another element of the Council's support for local businesses facing economically challenging times. Do put it in your calendar to attend and share with your communities. One other thing, please walk or cycle to the venue. Or park at Cambourne Business Park and walk over.

### **South Cambs Councillor wins National 2022 Cllr Award**

The Council is proud to announce that Cllr Peter McDonald the District Councillor for Duxford Ward and Lead Cabinet Member for Economic Development has won a 2022 Cllr Award for Resilience and Recovery. The Cllr Awards are the only national awards to celebrate the vital contributions of local councillors across England and Wales. The award was to recognise his oversight of business grant funding which enabled Cambridgeshire's unique business growth fund, supporting 102 local businesses. Judges were also impressed by the part this played in the rapid rollout of electric vehicle and charging point technology across the district.

Congrats to Cllr MacDonald and the South Cambs Business Team. This work goes to the heart of one of our key objectives of supporting local businesses who are the mainstay of our local economy. Example here <https://www.scams.gov.uk/linton-jazz-pianist-thanks-councils-business-support-team/>

### **Local Issues**

The current up to date list of planning applications received and on hand for villages in Caldecote Ward is at <http://tumihawkins.org.uk/wp-content/uploads/2022/11/221103-Planning-Applications-Summary-Caldecote-Ward.pdf>. I highlight those that may be of particular interest below.

#### **Caldecote**

Reference: 22/04215/FUL: Linden Phase 2 Construction of 66 dwellings

Reference: 22/03561/FUL: Bourn Quarter, Phase 2 development, erection of 15,056sqm/162,090sqft of commercial floorspace

Reference: 22/04746/PRIOR: Land At Clare Drive, Installation of 17m high slim-line monopole, supporting 6 no. antennas, 1 no. wraparound equipment cabinet at the base of the monopole, 3 no. equipment cabinets and ancillary development

#### **Bourn**

Reference: 22/04486/HFUL: 2-storey front extension, Baldwins Close

Reference: 22/01133/FUL: Retrospective temporary 2yr change of use of part of the former runway for external storage,

#### **Kingston**

Reference: 22/03966/FUL: Tinkers Lane, Conversion of agricultural building to 2 dwellinghouses

#### **Little Gransden**

Planning Applications received

Reference: 22/04738/PRIOR: Main Road, Change of use of agricultural building to commercial

### **Casework**

Please do feel free to contact me with comments, questions, problems, reports, suggestions or complaints to do with SCDC services. I will help as best I can



---

You will find the current and past reports on my blog at <https://tumihawkins.org.uk/caldecote-ward/reports/monthly-reports/2022-23-monthly-reports/>. Feel free to read, share and/or download.

*Tumi*

Tumi Hawkins  
3 November 2022

<b>Email me @:</b>	<a href="mailto:tumi@tumihawkins.org.uk">tumi@tumihawkins.org.uk</a>
<b>Read my blog at:</b>	<a href="http://www.TumiHawkins.org.uk">http://www.TumiHawkins.org.uk</a>
<b>Twitter:</b>	<a href="#">@CouncillorTumi</a>
<b>Facebook</b>	<a href="#">@itsCouncillorTumi</a>
<b>LinkedIn</b>	<a href="#">TumiHawkins</a>
<b>Call me on:</b>	07802 323269

## Appendix B

**Financial report 08 Nov 2022**

N.B. All figures exclude VAT

Item	Budget 2022/23 £	Expenditure YTD £	Budget minus expenditure YTD £	
Grass and Hedge cutting	2,820.00	2,164.70	655.30	Budget includes £30 receipt from Fasnacloch Estates
Insurance	399.68	417.74	- 18.06	
Clerk's salary	2,167.00	1,788.62	378.38	
Grants (section 137)	1,156.68	850.00	306.68	
Village Hall upgrade	1,288.00	1,287.58	0.42	
Audit fees	65.00	65.00	-	
Village asset maintenance	606.19	84.00	522.19	
Subscriptions	445.54	92.00	353.54	
Parish Magazine	749.75	-	749.75	
Footpath lighting	160.00	86.79	73.21	
Miscellaneous and expenses	1,000.00	260.59	739.41	
Income other than precept	- 150.00		- 150.00	Excludes Fasnacloch as included in grasscutting
<b>Total</b>	<b>10,707.83</b>	<b>7,097.02</b>	<b>3,610.81</b>	

<b>Bank balances</b>	Current account:	8,037.12
	Deposit account:	14,594.78
<b>S106 money (included in above)</b>	'Open space'	-
	'Community facility'	685.00